

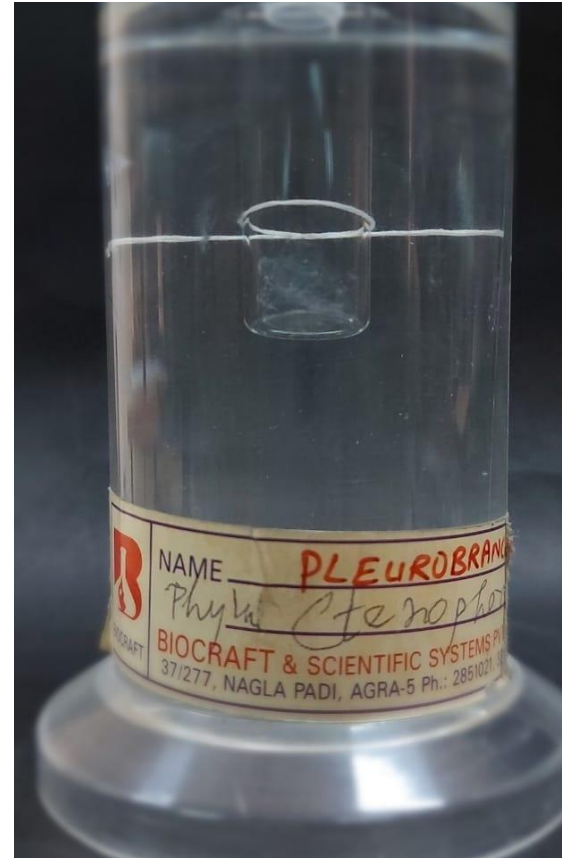
Phylum: Ctenophora

Classification:

- Kingdom..... Animalia
- Phylum.....Ctenophora
- Class.....Tentaculata
- Genu..... *Pleurobrachia*

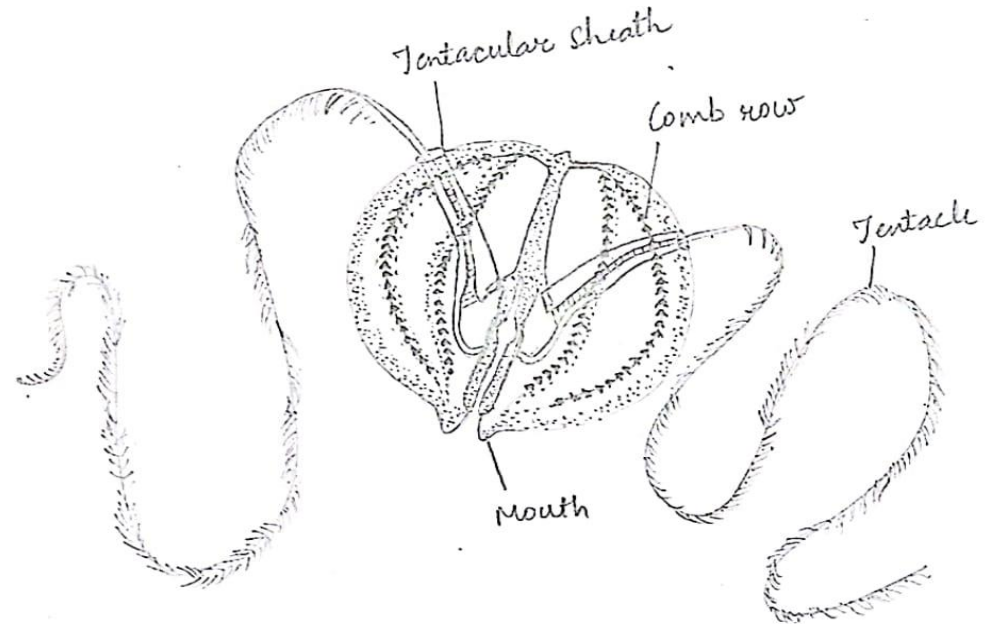
Habitat:

- In surface waters of the coastal NW Pacific within 5 km of shore to about 50 m deep, though is usually in the upper 15 m during the day.



Comments:

- Pleurobrachia is common marine pelagic forms
- Body is glassy transparent and pear shaped or walnut shaped
- Pleurobrachia pileus is about 20 mm in diameter
- A slit like mouth is present at the oral end.
- Food is captured by tentacles with help of colloblasts.
- Hermaphrodite
- Gonads develop in the meridional gastrovascular canals.
- A free swimming cydippid Larva.



Pleurobrachia
(comb jelly)